



Marathon Man

Sherborne's Managing Director Chris Long and his wife Claire are nothing if not competitive.

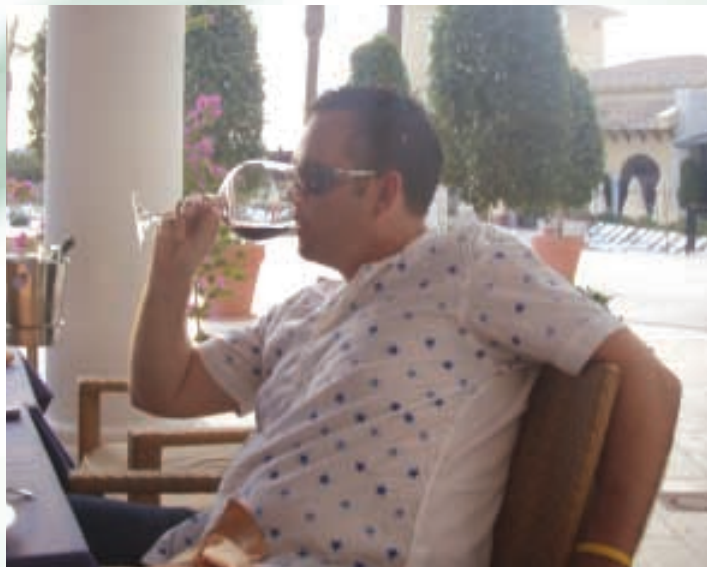
When Claire completed the Race for Life a few weeks back to raise money for cancer charities, Chris, not to be outdone, immediately declared his intention to run the New York Marathon in aid of our friends at CHASE Children's Hospice.

We're not sure when he entered whether he

Well done Claire

really expected to be accepted - but he has been and is now in constant training for the big day on the 4th November when he will take part in what is widely regarded as one of the toughest races there is.

Chris wants to raise as much money as possible for CHASE so we'd be really grateful to anyone who feels they would like to support him - you can sponsor direct online by visiting www.justgiving.com/MrChrisLong



Chris gets down to some serious training

Owzat!

We are fortunate at Sherborne to work for some lovely people but it's not every week we find ourselves building a conservatory for a sporting legend.



Sir Alec Bedser and Chris Long

Sir Alec Bedser is one of the greatest English cricketers of all time. In a Test career that spanned 1946 to 1955 he led England's bowling attack taking 236 wickets in 51 appearances, including career-best match figures of 14 for 99 in the 1953 Trent Bridge Test against Australia, when he helped England regain the Ashes.

He helped Surrey to eight County Championships and took 100 wickets in a county season eleven times, figures that rank him favourably amongst the game's greatest players.

Three in a Row

Several interesting jobs have been in construction through the summer.

When building conservatories it's quite common for the customer's neighbours to want to have a look and perhaps see the benefit that something similar could mean to them. But it's slightly unusual to find ourselves building three conservatories for three neighbours all at the same time as we are here.

Each has been individually created but within an overall concept to ensure a consistent design approach.



Sherborne's three in a row!



Sherborne's 'class' conservatory

Equally it's not everyday that we build a conservatory as a classroom extension as this one nearing completion at Windlesham Village Infant School. This had to be started and completed through the school holidays so we'll be interested to find out what the children think of it once term is underway.

Up, Up, Up and Away!

We were delighted to sponsor the Heather Ridge Infant School when they decided to have a fund-raising balloon race at their summer fair. Each one of the children attached a card with their details on before releasing them into the sky - what no one was expecting was replies from as far away as Belgium and Germany!



They're off!

Congratulations go to David Guy, who's balloon made a remarkable 467 mile journey to Bad Berleburg in Germany.



Sherborne Ltd

Head Office & Farnborough Showroom:
135 Lynchford Road, Farnborough, Hants, GU1 46HD
Tel: 01252 370917

Principal Showsite:
Wyevale Garden Centre, London Road (A30), Windlesham,
Surrey, GU20 6LL
Tel: 01344 626130

www.sherbornewindows.co.uk

Sherborne support CHASE Children's Hospice



newsletter
AUTUMN 2007
Sherborne

newsletter
AUTUMN 2007
Sherborne

Sherborne Tees Off for Anna

For several years now we have been pleased to sponsor a Sherborne golf team to take part in a fundraising golf tournament to raise money for the Anna's Room Trust.



They only call him 'Tiger' because he eats a lot of Frosties

Anna, who is 28 years old, has been a patient in the Wessex Neurological Centre at Southampton General Hospital since August 2005 suffering from Encephalitis. Her friends and family have set up the Anna's Room Trust in her name. The initial aim is to provide portable sensory equipment for use in the centre and ultimately to equip and maintain a sensory room to be used by anyone in the unit. This will be called Anna's room.

Andy (Tiger) Long, Chris Littlewood and Shaun Fox made up the Sherborne team playing at the beautiful course at Uckfield in East Sussex. Congratulations to all involved as the event raised over £5000 towards the cause.



Chris Littlewood shows an unerring ability to leave a 4 foot putt 3 inches short of the hole

New Products

The range of products available from Sherborne continues to expand – and largely in response to customer requests.

We are now able to provide the Yale range of Home Security Systems which include wireless alarm systems for your home and outbuildings, personal attack alarms and documents security systems. All available to be seen at our showrooms, these are systems that are designed to be easily installed by you, although you might decide, if you are short of time or want the job done professionally, to have us install a new alarm system for you – either as a separate job or as part of a door or window installation.

Our new range of door and window furniture has proved extraordinarily popular. The quality of the product and the cleanliness of the designs has been much admired but it is the fact that styles and colours are consistent throughout the complete range is what has really caught the imagination. Normally only available as part of a new door and window installation, we will now supply this exclusive range of door and window furniture for you to fix - or we can undertake an installation in your home.

We can also provide a range of specialist cleaning products for uPVC windows and conservatories

And that's not the end of it – in coming months we expect to be able to offer a unique range of beautiful furniture which we will be importing from China and displaying at our showsites.



New security products

18th Century Design - 21st Century Technology

In true British fashion the wet summer didn't dampen the spirits when we celebrated the completion of the final phase of our conservatory showsite at Windlesham with Morris Dancing and free Scrumpy.

The last conservatory we have built is timber constructed and in the style of an 18th century Orangery – although, of course, it uses the very latest technologies to make it energy efficient and low maintenance. What we have then done is build right next to it, a conservatory in uPVC which features our Evolution range 'wood white' finish – probably the nearest the industry has yet come to simulating a timber finish.

What we have always wanted to do at our Showsites is to give customers the opportunity to see all the different products available to them and to demonstrate the different ways a conservatory can be designed and used.

We'll continue to update Windlesham with all the latest products as they come available but, for the moment, we will now turn our attention to our next showsite which will open later this year at the Wyevale Garden Centre at Sherfield on Lodden, near Basingstoke.



So this is what happens when you drink Scrumpy!!



Inside the Orangery at Windlesham Showsite



The Orangery at Windlesham Showsite

newsletter
Sherborne

AUTUMN 2007

newsletter
Sherborne

AUTUMN 2007