



slidersuk

www.sliders-uk.com

The Ultimate ALUK Aluminium Bi-Folding Door

Part of the exclusive range available from Sliders UK



A heavy-weight aluminium system offering exceptional design flexibility



Intelligent design

The Ultimate ALUK Aluminium Bi-folding Door is manufactured in ALUK's BSF 70 profile, one of the most technically advanced and highly rated aluminium bi-fold door systems available.

Part Q and PAS24 accredited, it features concealed running gear, heavy-duty rollers and stainless steel tracks with multiple opening options.

With white gloss, anthracite grey matt, anthracite grey-on-white, and semi-gloss graphite black, and black-on-white, available as standard colours, the Ultimate ALUK Aluminium Bi-folding Door combines an enhanced aesthetic with exceptional performance with all hardware and frames, guaranteed for 10 years.

**Advanced performance,
elegant design**



**PAS24 and
Part Q approved**



Structural strength

Accommodating larger individual panels, while offering a choice of configurations, the Ultimate ALUK Bi-folding Door from Sliders UK delivers impressive design flexibility.

This is based on a light weight but ultra-strong aluminium system, delivering the structural integrity to span up to 7000mm, with individual sashes of up to 1200mm wide and 3000mm tall.

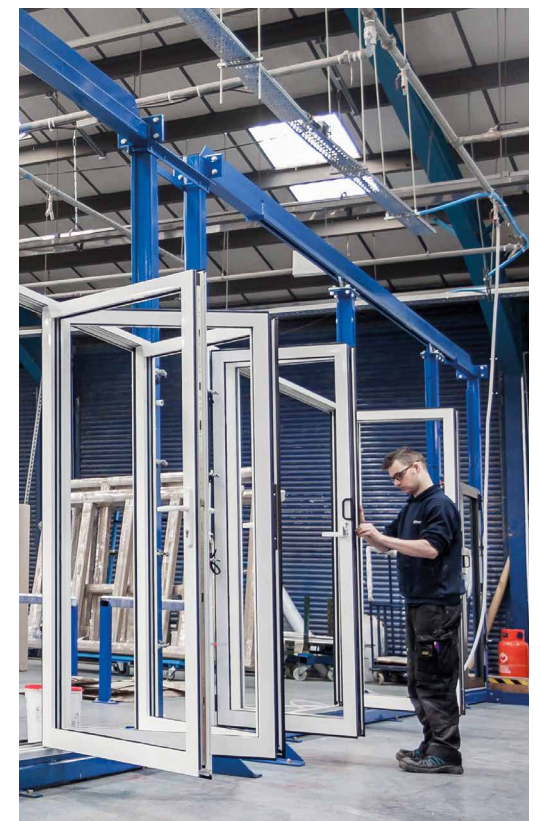
Advanced performance

The Ultimate ALUK Aluminium Bi-folding Door is severe weather rated to BS6375-1:2009, achieving Class 9a (600Pa) water tightness; Class 4 (600Pa); wind load Class E2400 (1800Pa). The use of a high performance thermal break, also means Ultimate ALUK Aluminium Bi-fold achieves U-values as low as 1.6W/m²K.*

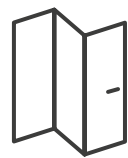
*Subject to specific site conditions and wind loads.



With multi-point locking and a robust anti-pick, drill and tamper cylinder and handle, the Ultimate ALUK Aluminium Bi-folding door is also available in an enhanced security PAS24 and Part Q compliant configuration.



Style – built on substance



Ultra-smooth bottom running and concealed bogie system

The Ultimate ALUK Bi-folding Door employs a concealed but heavy-duty bottom running system and track with four wheels per carriage. This guarantees smooth and reliable running, while accommodating individual leaf weights of up to 100kg.

Flexible configurations, styles and designs



*Non-weathered.

Finish options



Standard profile colours

The Ultimate ALUK Bi-folding Door is available in white gloss (RAL9910), anthracite grey matt (RAL7016) and graphite black semi-gloss (RAL9011), plus anthracite grey and black-on-white, as standard.

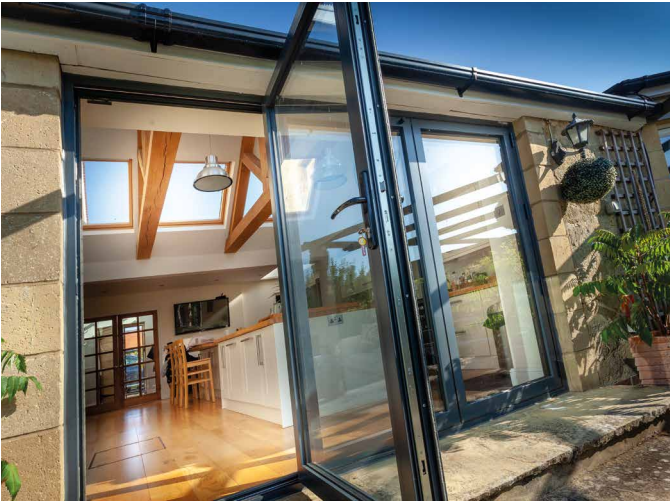
We can also offer any RAL colour or combination of colours, on special order.

Finishes are polyester powder coated and are guaranteed for 10-years.

Colour-matched hardware

Master door handles are available in colour matched white and black, plus chrome and silver.

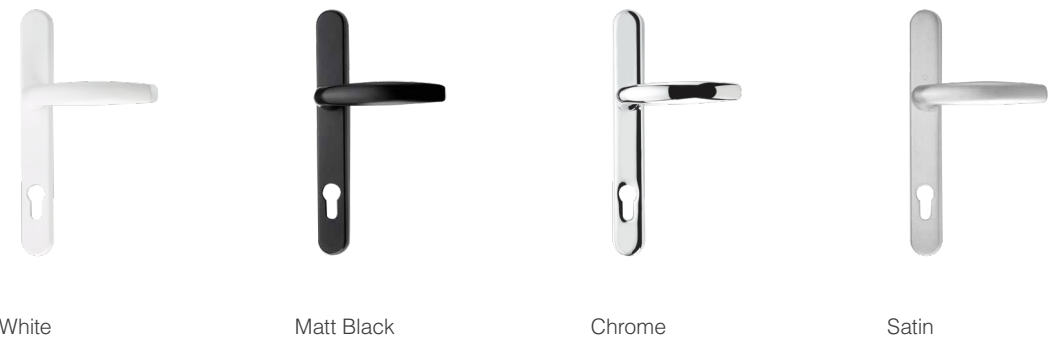
T-handles are available in white, black, chrome and black.



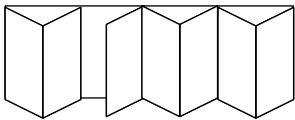
Standard colour options



Door handle options



Configurations



With inward and outward opening options, the Ultimate ALUK Bi-folding Door offers exceptional design flexibility with 14 different configurations up to a maximum seven individual panels.

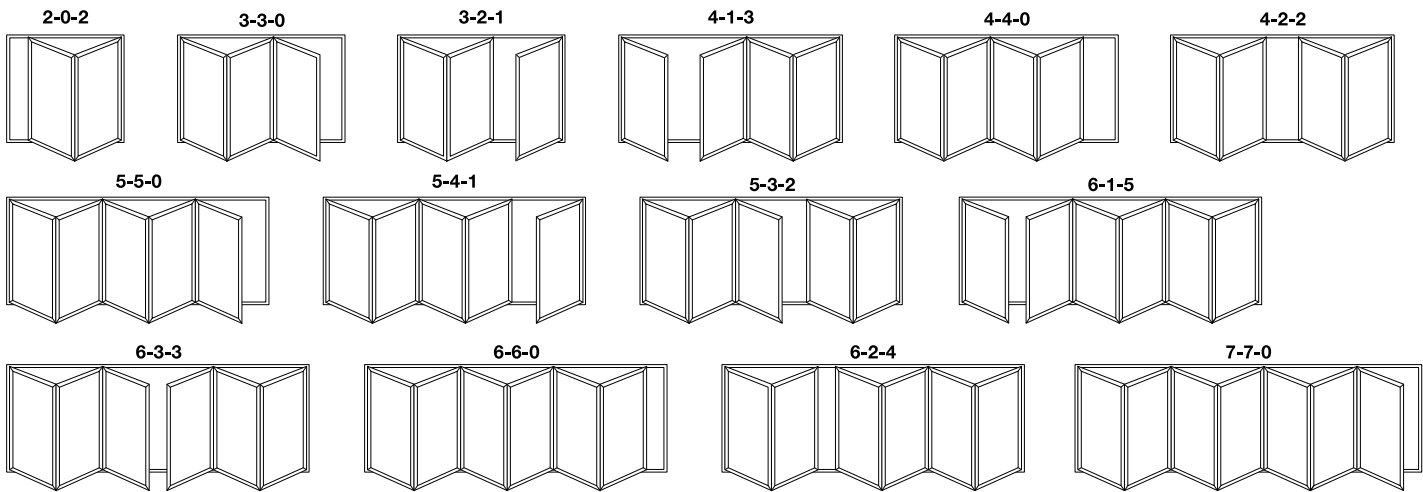
Maximum and minimum heights and widths:

Height 1600mm–3000mm

Width 1600mm–7000mm

Individual panels not to exceed 1200mm

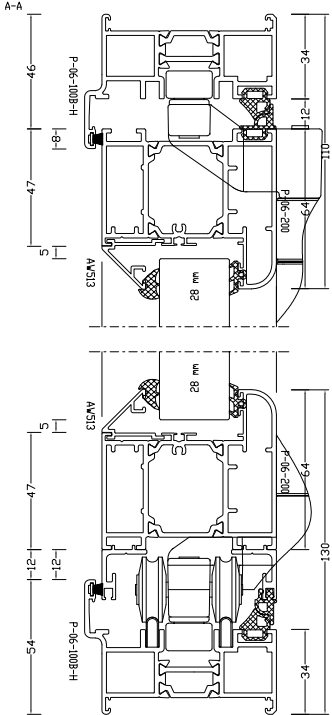
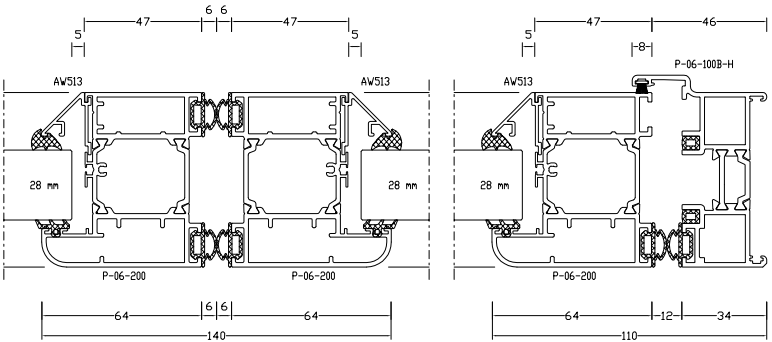
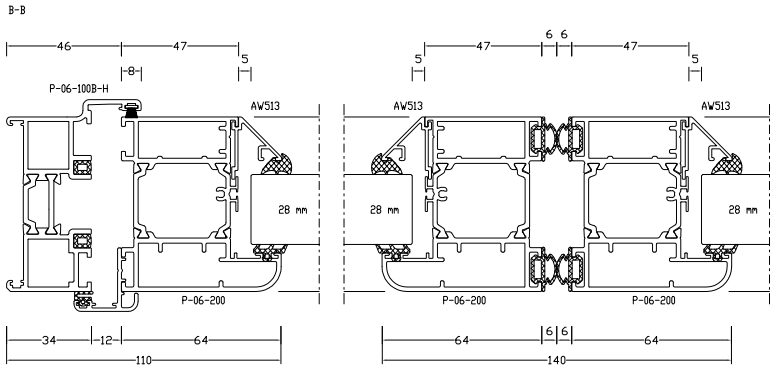
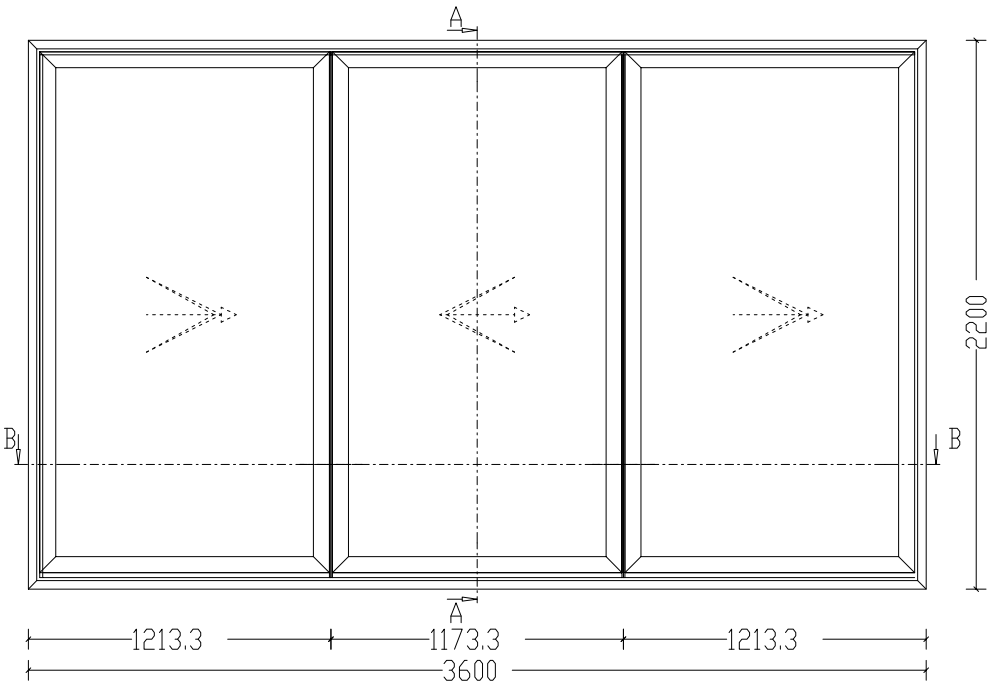
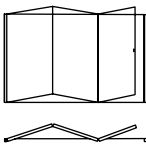
Sash weight (max) 100kg



*Indicates Document Q Compliance not available with this scheme (and it's reverse, eg. 202 and 220).

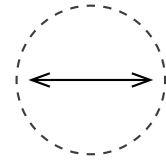
Technical information

Cross sections

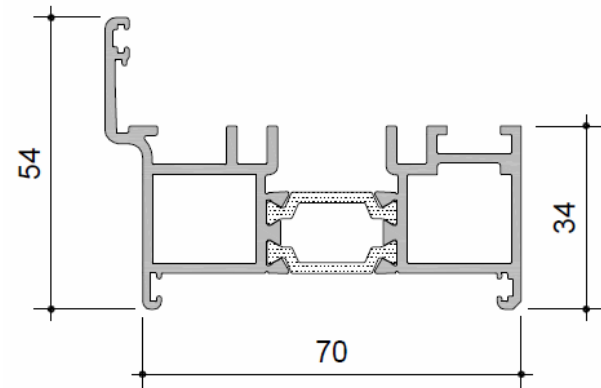


Technical information

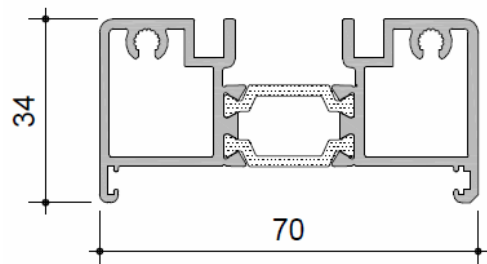
Threshold options



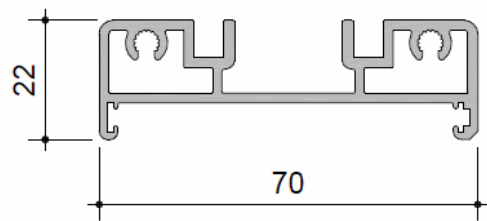
Standard threshold



34mm Low threshold



22mm Low threshold



The Ultimate ALUK bi-folding door

ALUK[®]



Contemporary and flexible design with softline or square detail

14 different configurations of up to 7 panels

Open in or open out

Four stainless steel wheels per carriage ensures smooth and consistent operation accommodating weights of up to 100kg

Unique, flush T-handle ensures square stacking of doors

Maximum span of 7000mm

Maximum height 3000mm

Maximum individual panel width of 1200mm and weight of 100kg

Narrow profile maximises glazed area with glazing sizing range from 24mm–40mm

U-values as low as 1.6W/m²K

Multi-point locking, Part Q compliant and fully tested to PAS24

Severe weather rated to BS6375-1:2009

Low threshold Part M compliant options



slidersuk

Contact a member of the sales team on 01772 698222
or email sales@sliders-uk.com to find out more.

www.sliders-uk.com



High precision manufacture

We employ the strictest quality management system, going far beyond our BSI approved controls.

This includes the manufacture of doors on rigs, which means that all running and door operation is fully tested before doors leave the factory floor.

Fully wrapped and delivered by our dedicated fleet, it means that we're able to offer you guaranteed quality and service.

Images shown are for illustration purposes only.