




Sherborne
Windows • Doors • Glazed Extensions

the **ultimate**[®]
collection

70mm Double Rebated Composite Doors

WHY CHOOSE AN ULTIMATE COMPOSITE DOOR

Choosing a door for your home is a very important and difficult decision, particularly given the number of options available. You need to know you are choosing the right door for your home, a door that is as secure as it is stylish and that is designed to stand the test of time.

The Ultimate 70mm double rebated composite door has been developed to the highest of standards, using the very best materials to ensure you get everything you are looking for and more.

Stunning Aesthetics

Ultimate doors are available in various door styles and a wide range of colours. Furthermore, there are a number of triple glazed laminated glass designs to choose from to truly personalise your door. Adding in the low maintenance and durability that comes with choosing a GRP composite door makes the Ultimate 70mm composite door a very appealing option.

Enhanced Security

Ultimate doors feature a multipoint locking system and high security hinges that combine to protect your door against unlawful intrusion. The triple glazed unit provides additional protection with 6.8mm laminated glass and 4mm toughened glass either side of the clear/decorative centre pane.

Impressive Kerb Appeal

The woodgrain finish on an Ultimate composite door is developed from oak tree grain, creating a beautiful authentic appearance. You'll find the same woodgrain effect, moulding design and exact colour match on the slim glazing cassette too, giving a seamless and elegant finish.

Superb Thermal Efficiency

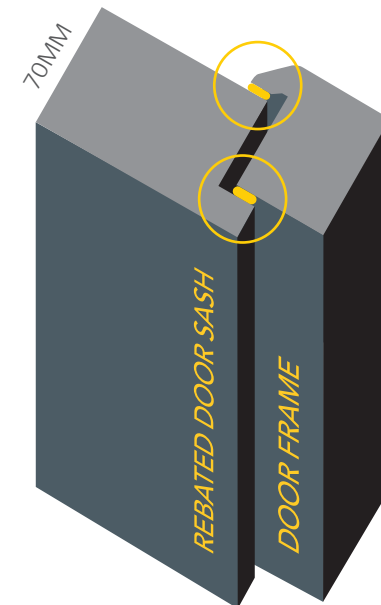
When it comes to energy efficiency, the Ultimate 70mm composite door is a smart choice, proven in independent testing to be substantially more thermally efficient than traditional timber doors and timber core composite doors. See page 4 for more information.

Ultimate Weatherproofing

Ultimate doors are double rebated, providing an additional seal and increased weatherproofing. Water resistant polymer composite rails protect its core and help to repel water absorption which otherwise could lead to delamination of the GRP skin and cause functional problems often associated with lower quality products. Your Ultimate double rebated 70mm composite door will keep the weather at bay and provide longer lasting protection.



THE 70MM THICK DOOR SASH IS REBATED PROVIDING INTERNAL AND EXTERNAL SEALS





Style CL02 | Chartwell | Kara Glass (brass caming) | Rose Furniture



Style CL01 | RAL 7042 Traffic Grey A



Style EC02 | RAL 5023 Distant Blue | Aspen Glass (zinc caming)

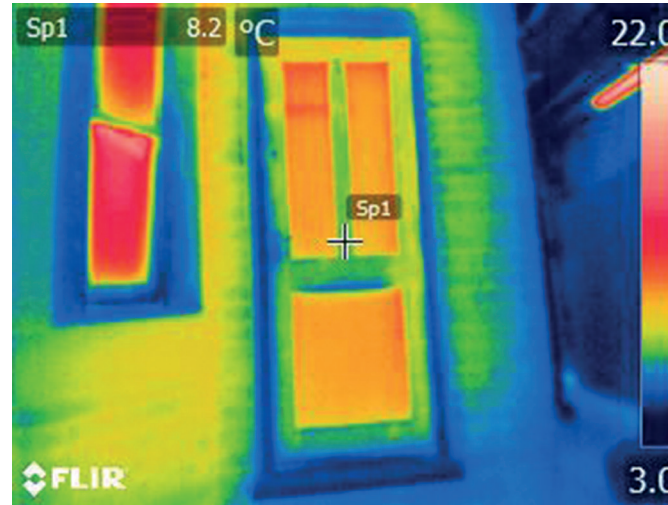
ULTIMATE ENERGY EFFICIENCY

We all worry about how much energy our homes use. The rising cost of our energy bills and our impact on the environment mean we want to keep our consumption to a minimum.

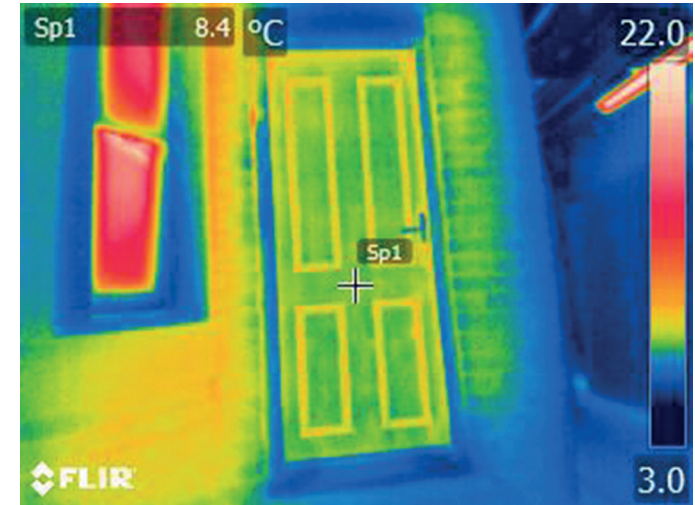
One of the best ways to do this is to choose thermally efficient products that keep warmth in and cold out, saving money and emissions.

When it comes to thermally efficient doors, Ultimate 70mm double rebated composite doors are one of the best choices you can make.

The Ultimate double rebated composite door is more energy efficient than a traditional timber door or a solid timber core composite door as illustrated on the thermal images shown right.

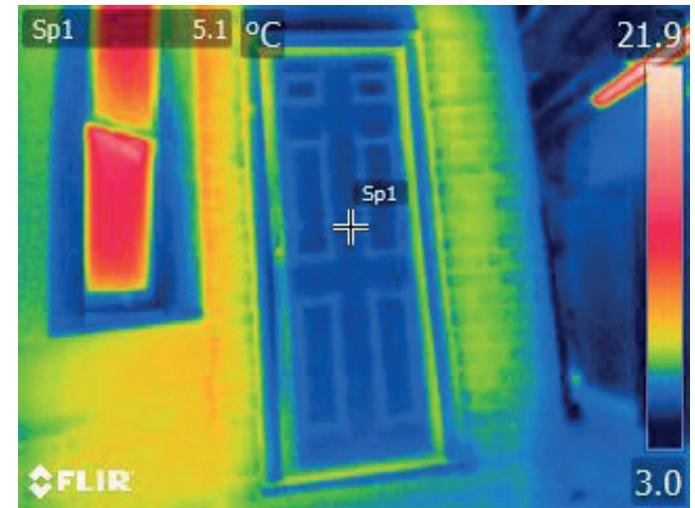


Traditional timber panelled door



Solid timber core composite door

Photographs show the thermal efficiency of each of the doors we tested. The darker the blue, the less heat is being lost. Reds and greens, the predominant colours on the timber door indicates high heat loss.



The Ultimate 70mm double rebated composite door

ENERGY EFFICIENT

37% MORE THERMALLY EFFICIENT THAN A TIMBER PANELLED DOOR

ULTIMATE SECURITY

For your security, all Ultimate doors are fitted with a robust multipoint lock.

Simply by lifting the handle upwards, all locking features are engaged.

To prevent cylinder manipulation, Ultimate doors are fitted with a 3 star high security Yale cylinder, and for convenience all doors are supplied with 3 keys as standard.



Townhouse Lock Option

As an alternative to the standard locking system, you may wish to consider our townhouse lock option.

The townhouse lock is completed with a traditional escutcheon finger pull.

This option also includes the high security cylinder as detailed above.



Hooks & Dead Locks

Outer/inner facing hook locks and dead locks provide strength and security.



Compression Rollers

Ultimate doors include roller cams to ensure a tight seal.



Hinges

3 high security, anti-lift hinges. Multiple colour options.

SLEEP TIGHT

Ultimate 70mm composite doors feature a double rebate, they are 57% thicker than a standard door and have a high density core which not only makes your home energy efficient, but is also proven to reduce the impact of outdoor noise in your home.

Every Ultimate 70mm composite door also features 50mm triple glazing to further improve the acoustic insulation of your home.

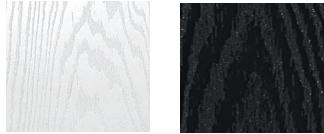


DOOR COLOUR RANGE

STUNNING AESTHETICS

CHOOSE FROM OUR VARIED COLOUR RANGE

Standard Colour Range



RAL 9016
White

RAL 9005
Black



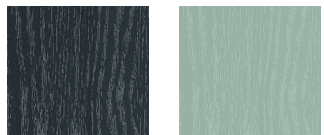
NCS S 3560-Y90R
Red

RAL 5004
Blue



RAL 6009
Green

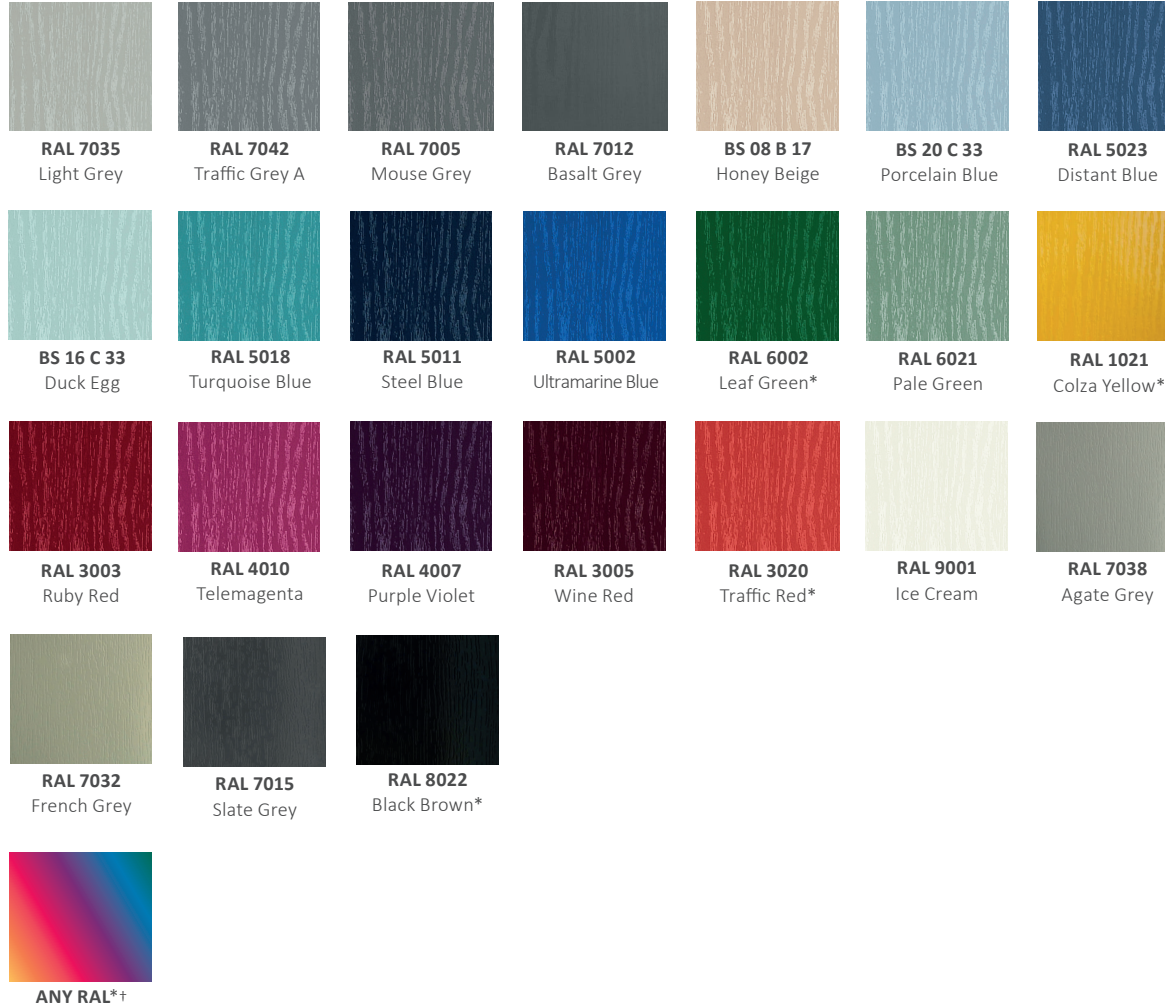
Premium Colour Range



Anthracite Grey

Chartwell

Extended Colour Range



RAL 7035
Light Grey

RAL 7042
Traffic Grey A

RAL 7005
Mouse Grey

RAL 7012
Basalt Grey

BS 08 B 17
Honey Beige

BS 20 C 33
Porcelain Blue

RAL 5023
Distant Blue

BS 16 C 33
Duck Egg

RAL 5018
Turquoise Blue

RAL 5011
Steel Blue

RAL 5002
Ultramarine Blue

RAL 6002
Leaf Green*

RAL 6021
Pale Green

RAL 1021
Colza Yellow*

RAL 3003
Ruby Red

RAL 4010
Telemagenta

RAL 4007
Purple Violet

RAL 3005
Wine Red

RAL 3020
Traffic Red*

RAL 9001
Ice Cream

RAL 7038
Agate Grey

RAL 7032
French Grey

RAL 7015
Slate Grey

RAL 8022
Black Brown*

ANY RAL*†

...OR CHOOSE
any RAL colour

Have your door spray painted in the bespoke RAL Colour of your choice (the examples shown are for your guidance only).



White on internal side. Colours shown in this brochure should be used for guidance only as the limitations in photographic and printing processes may mean that colours of products vary from those illustrated.

*5 year surface warranty applies. All other colours carry a 10 year warranty. †Any RAL option, price on application, additional charges may apply. Touch-up pots are available upon request, additional charges may apply.

RAL numbers are given for guidance only to the closest colour match, due to the surface finish of a composite door an exact match is not guaranteed, especially if trying to match against a foiled outer frame of the same colour.

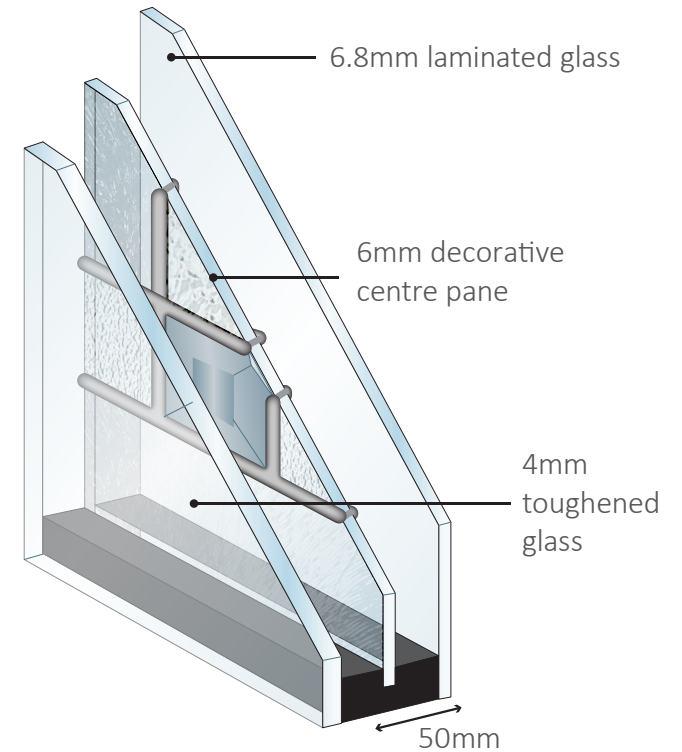
GLASS OPTIONS

Decorative Glass Options

Your choice of decorative laminated glazing panels is the perfect finishing touch and a beautiful focal point.

Each design perfectly complements our door styles and creates a stylish finish. All have slim sightlines to maximise light transmission and their frame uses the same moulding design and woodgrain effect as the rest of the door for a sophisticated and seamless finish.

Each glass unit is 50mm in thickness and all of the designs are triple glazed, so the delicate decorative panel is encapsulated between two clear panes.



Kara
Decorative triple glazing featuring glue chip backing glass with clear bevels and brass or zinc caming.



Monza
Decorative triple glazing featuring grey bevels and textured glass.



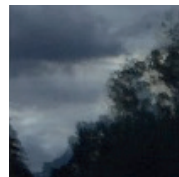
Aspen
Decorative triple glazing featuring grey bevels and textured glass.



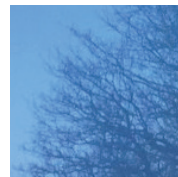
Edwardian
Decorative triple glazing featuring various coloured and textured glass.

Obscure Glass Options

You may prefer not to have one of the above decorative glass options and instead choose either clear glass or one of the 2 obscure glass options shown right. These will also be 50mm triple glazed units to the same specification shown above, but with the middle pane either Clear, Satin or Stippolyte.



Clear



Satin



Stippolyte



54

6 PANEL SOLID CLO1 

RAL 7042 Traffic Grey A

6 PANEL SOLID CLO1

Far from being just the safe choice, a Classical 6 Panel Solid door is the ultimate expression of confidence.

Without decorative glazing to draw the eye you can focus on the beautiful woodgrain finish.

KERB APPEAL

IMPRESSIVE WOODGRAIN FINISH
DEVELOPED FROM OAK TREE GRAIN



Style CL01 | RAL 9005 Black



RAL 9016 White inside



CLASSICAL CL02

The Classical design is perfect when you want your door to have decorative glazing but also want to maintain your privacy. The crisp clean lines create a classic, elegant look.

GLASS PATTERNS AVAILABLE



Style CL02 | RAL 5004 Blue
Monza Glass (zinc caming)



Kara

Glue chip backing glass with clear bevels and brass or zinc caming



Monza

Grey bevels with various textured glass pieces and zinc caming



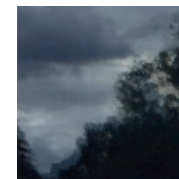
Aspen

Grey bevels with various textured glass pieces and zinc caming

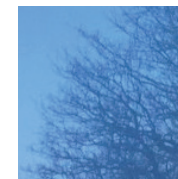


Edwardian

Various coloured and textured glass pieces with zinc caming



Clear



Satin



Stippolyte

CLASSICAL CL03

This traditional six-panelled design has an attractive glass design that flows between the panels, creating a sophisticated and stylish appearance while still allowing the light to flood in.

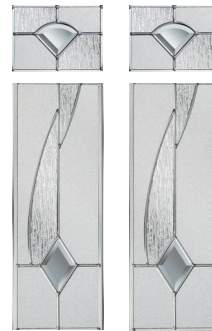


GLASS PATTERNS AVAILABLE



Kara

Glue chip backing glass with clear bevels and brass or zinc caming



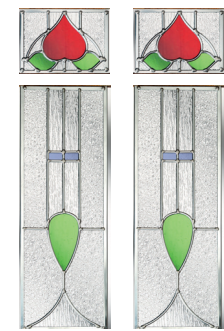
Monza

Grey bevels with various textured glass pieces and zinc caming



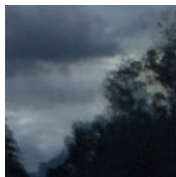
Aspen

Grey bevels with various textured glass pieces and zinc caming

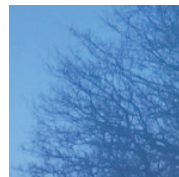


Edwardian

Various coloured and textured glass pieces with zinc caming



Clear



Satin



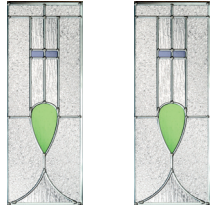
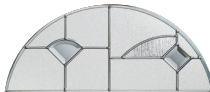
Stippolyte

ECLAT EC01

The pleasing combination of glass shapes on the EC01 makes your front door a focal point for the eye, making a beautifully welcoming statement.



GLASS PATTERNS AVAILABLE

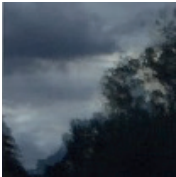


Kara
Glue chip backing glass with clear bevels and brass or zinc caming

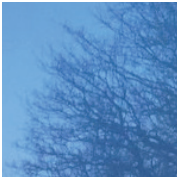
Monza
Grey bevels with various textured glass pieces and zinc caming

Aspen
Grey bevels with various textured glass pieces and zinc caming

Edwardian
Various coloured and textured glass pieces with zinc caming



Clear



Satin



Stippolyte



ECLAT ARCH EC02

When your door needs to offer privacy, the EC02 is the perfect choice. The decorative glass arch adds interest without revealing what's beyond.

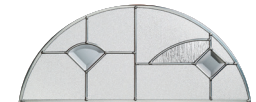
GLASS PATTERNS AVAILABLE



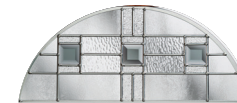
Style EC02 | Anthracite Grey
Edwardian Glass (zinc caming)



Kara
Glue chip backing glass with clear bevels and brass or zinc caming



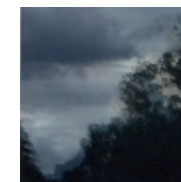
Monza
Grey bevels with various textured glass pieces and zinc caming



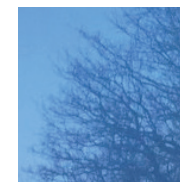
Aspen
Grey bevels with various textured glass pieces and zinc caming



Edwardian
Various coloured and textured glass pieces with zinc caming



Clear



Satin



Stippolyte

ECLAT CRAFTSMEN EC05

The EC05 Craftsman design is perfect for maintaining privacy but will also allow the light to fill your home.



GLASS PATTERNS AVAILABLE



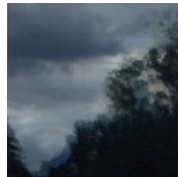
Kara

Glue chip backing glass with clear bevels and brass or zinc caming

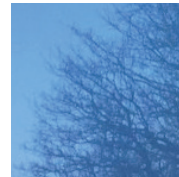


Aspen

Grey bevels with various textured glass pieces and zinc caming



Clear



Satin



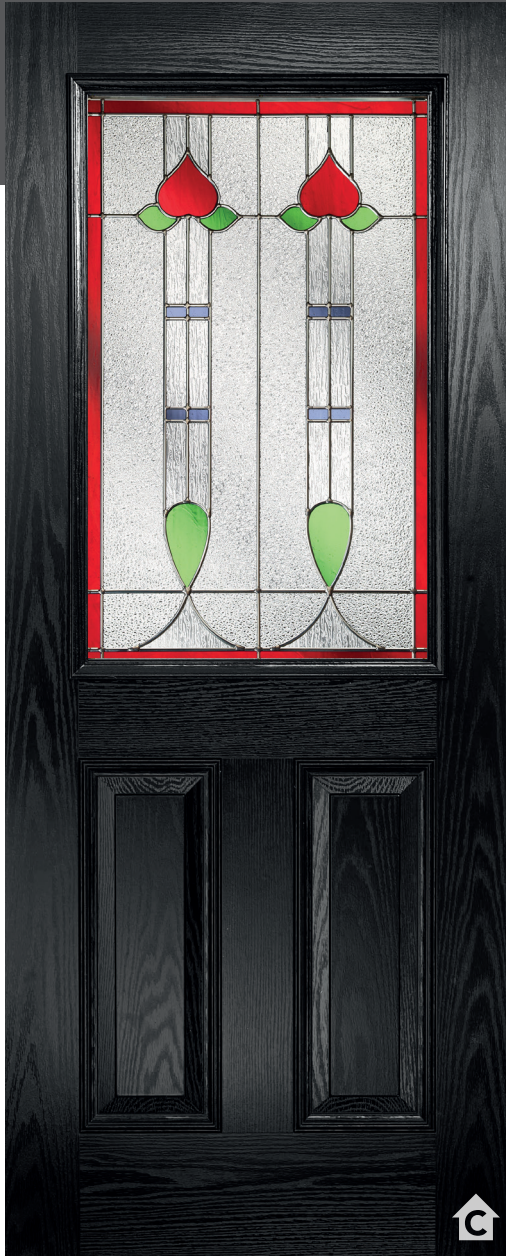
Stippolyte

Style EC05 | RAL 9016 White | Kara Glass (zinc caming)

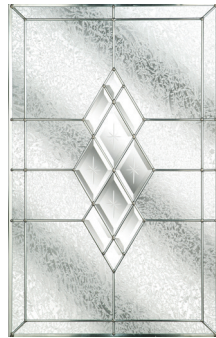


ELEGANCE EL01

Our Elegance design is equally popular as a front door and a back door. It maximises the light that floods into your home, while its classically simple lines are perfect when you want understated perfection.



GLASS PATTERNS AVAILABLE



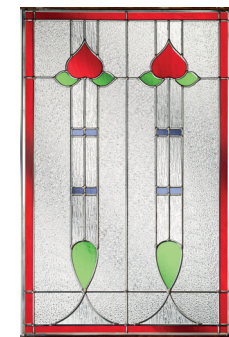
Kara
Glue chip backing glass with clear bevels and brass or zinc caming



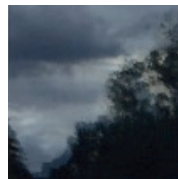
Monza
Grey bevels with various textured glass pieces and zinc caming



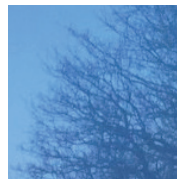
Aspen
Grey bevels with various textured glass pieces and zinc caming



Edwardian
Various coloured and textured glass pieces with zinc caming



Clear



Satin



Stippolyte



ELEGANCE ARCH EL02

The scale of the beautiful glazed pane in the Elegance Arch design provides a wonderfully dramatic focal point that welcomes visitors to your home as well as letting light flood in.

GLASS PATTERNS AVAILABLE



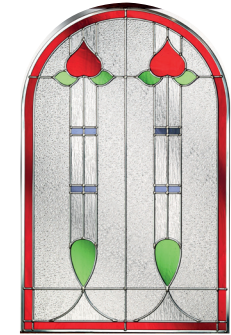
Kara
Glue chip backing glass with clear bevels and brass or zinc caming



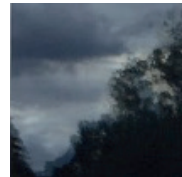
Monza
Grey bevels with various textured glass pieces and zinc caming



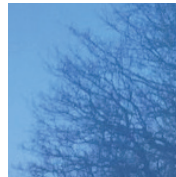
Aspen
Grey bevels with various textured glass pieces and zinc caming



Edwardian
Various coloured and textured glass pieces with zinc caming



Clear



Satin



Stippolyte



Style EL02 | RAL 9005 Black | Aspen Glass (zinc caming)

ESTEEM ES02

Our Esteem range offers understated style and is ideal if you want your door to make a statement of quiet confidence.



GLASS PATTERNS AVAILABLE



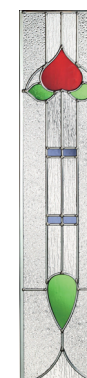
Kara
Glue chip backing glass with clear bevels and brass or zinc caming



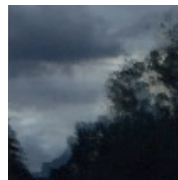
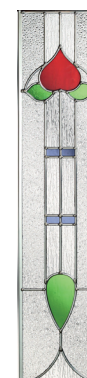
Monza
Grey bevels with various textured glass pieces and zinc caming



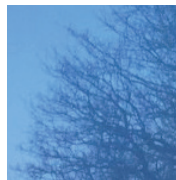
Aspen
Grey bevels with various textured glass pieces and zinc caming



Edwardian
Various coloured and textured glass pieces with zinc caming



Clear



Satin



Stippolyte



ESPRIT ESC07

With a sweeping curve of glazed panes, this Abstract design is a perfect example of how you can make an instant bold statement and modernise the entrance to your home.

GLASS PATTERNS AVAILABLE



Kara

Glue chip backing glass with clear bevels and brass or zinc caming



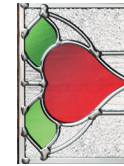
Monza

Grey bevels with various textured glass pieces and zinc caming



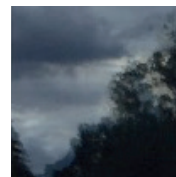
Aspen

Grey bevels with various textured glass pieces and zinc caming

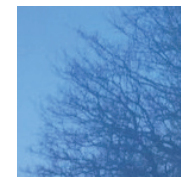


Edwardian

Various coloured and textured glass pieces with zinc caming



Clear



Satin



Stippolyte

ESPRIT ESC07(R) 

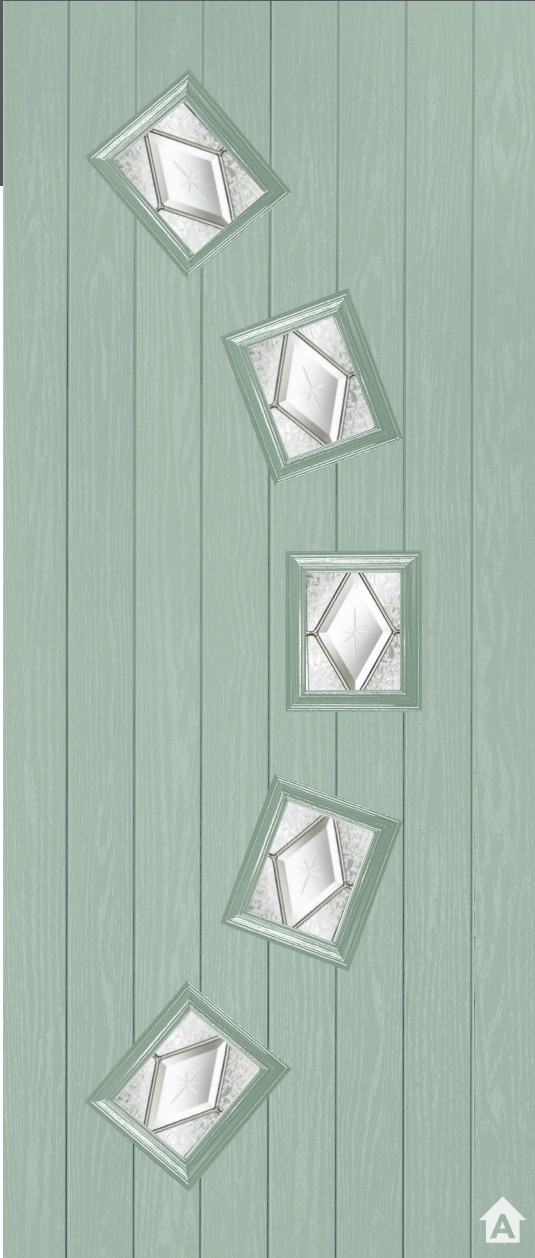
Left/Right Available

Ral 4002 Red Violet† | Satin

† Any RAL colour, charges may apply.

RENOWN REC07

With a sweeping curve of glazed panes, the Abstract design is a perfect example of how you can make an instant bold statement and modernise the entrance to your home.



Style REC07(L) | Chartwell | Kara Glass (zinc caming)



Style REC07(R) | RAL 9016 White
Kara Glass (zinc caming)

GLASS PATTERNS AVAILABLE



Kara

Glue chip backing glass with clear bevels and brass or zinc caming



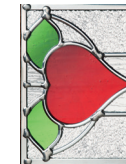
Monza

Grey bevels with various textured glass pieces and zinc caming



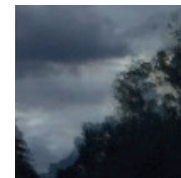
Aspen

Grey bevels with various textured glass pieces and zinc caming

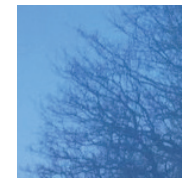


Edwardian

Various coloured and textured glass pieces with zinc caming



Clear



Satin



Stippolyte



ESPRIT ESC12

With near to full height glazing this design maintains a contemporary look whilst allowing light to flood in. The Aspen glass completes the contemporary look with clean lines and a strong geometric design.

GLASS PATTERNS AVAILABLE



Style ESC12(C) | RAL 7005 Mouse Grey
Aspen Glass (zinc caming)



Style ESC12(R) | RAL 4007 Purple Violet
Aspen Glass (zinc caming)



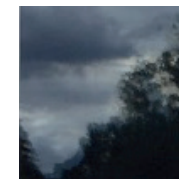
Aspen
Grey bevels with various textured glass pieces and zinc caming



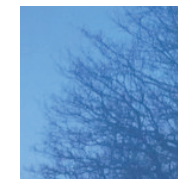
Monza
Grey bevels with various textured glass pieces and zinc caming



Trieste
Trieste glass pattern is only available on the Blade door design



Clear



Satin



Stippolyte

ESPRIT ESC12(L) 

Left/Centre/Right Available

RAL 4010 Telemagenta | Aspen

RENOWN REC14

With near to full height glazing this design maintains a contemporary look whilst allowing light to flood in. The Aspen glass completes the contemporary look with clean lines and a strong geometric design.



Style REC14(C) | RAL 9016 White | Trieste Glass (zinc caming)



Style REC14(R) | BS 08 B 17 Honey Beige
Trieste Glass (zinc caming)



Style REC14(L) | RAL 3005 Wine Red
Trieste Glass (zinc caming)

GLASS PATTERNS AVAILABLE



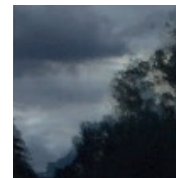
Aspen
Grey bevels with various textured glass pieces and zinc caming



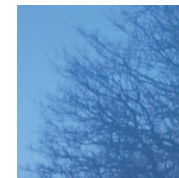
Monza
Grey bevels with various textured glass pieces and zinc caming



Trieste
Trieste glass pattern is only available on the Blade door design



Clear



Satin



Stippolyte

ESPRIT ESC22

Like wearing a single piece of jewellery, our ESC22 design has a small decorative glazing panel that makes a big statement. It welcomes visitors with delicate visual interest and brings a gleam of light into your home.



GLASS PATTERNS AVAILABLE



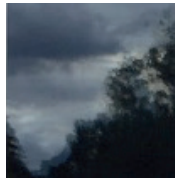
Kara

Glue chip backing glass with clear bevels and brass or zinc caming

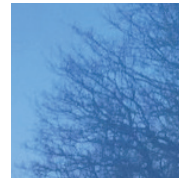


Aspen

Grey bevels with various textured glass pieces and zinc caming



Clear



Satin



Stippolyte



Style ESC22 | Anthracite Grey | Aspen Glass (zinc caming)



RENOWN TOP RE04

Like wearing a single piece of jewellery, our RE04 design has a small decorative glazing panel that makes a big statement. It welcomes visitors with delicate visual interest and brings a gleam of light into your home.

GLASS PATTERNS AVAILABLE



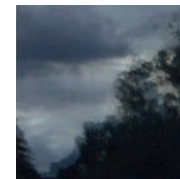
Kara

Glue chip backing glass with clear bevels and brass or zinc caming

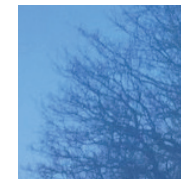


Aspen

Grey bevels with various textured glass pieces and zinc caming



Clear



Satin



Stippolyte

RENOWN TOP RE04 

RAL 7042 Traffic Grey A | Aspen

ESPRIT ESC19

Our ESC19 design offers understated style and is the ideal solution for a back door, yet is a perfect choice for a front door too.



GLASS PATTERNS AVAILABLE



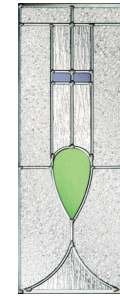
Kara
Glue chip backing glass with clear bevels and brass or zinc caming



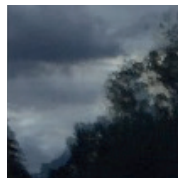
Monza
Grey bevels with various textured glass pieces and zinc caming



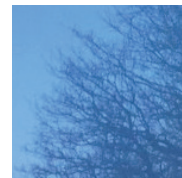
Aspen
Grey bevels with various textured glass pieces and zinc caming



Edwardian
Various coloured and textured glass pieces with zinc caming



Clear



Satin



Stippolyte



Style ESC19 | RAL 7032 French Grey | Monza Glass (zinc caming)

RENOWN REC15

Our REC15 design offers understated style and is the ideal solution for a back door, yet is a perfect choice for a front door too.



GLASS PATTERNS AVAILABLE



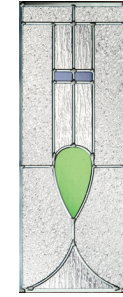
Kara
Glue chip backing glass with clear bevels and brass or zinc caming



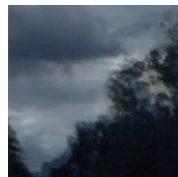
Monza
Grey bevels with various textured glass pieces and zinc caming



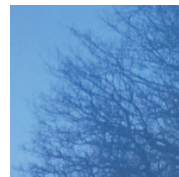
Aspen
Grey bevels with various textured glass pieces and zinc caming



Edwardian
Various coloured and textured glass pieces with zinc caming



Clear



Satin



Stippolyte



ESPRIT ESC09

The ESC09 design highlights the simple repeated linear glazing that can be positioned centrally or to the right or left of the door. This decision will often be influenced by the design and symmetry of your surrounding property.

GLASS PATTERNS AVAILABLE



Kara

Glue chip backing glass with clear bevels and brass or zinc caming



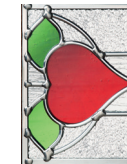
Monza

Grey bevels with various textured glass pieces and zinc caming



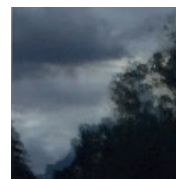
Aspen

Grey bevels with various textured glass pieces and zinc caming

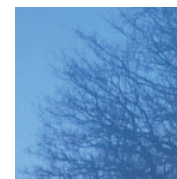


Edwardian

Various coloured and textured glass pieces with zinc caming



Clear



Satin



Stippolyte

ESPRIT ESC09(L) 

Left/Centre/Right Available

RAL 9005 Black | Aspen

RENOW REC09

The REC09 design highlights the simple repeated linear glazing that can be positioned centrally or to the right or left of the door. This decision will often be influenced by the design and symmetry of your surrounding property.



Style REC09(C) | NCS S 3560-Y90R Red | Kara Glass (brass caming)



Style REC09(R) | RAL 9005 Black
Aspen Glass (zinc caming)



Style REC09(L) | RAL 7042 Traffic Grey A
Monza Glass (zinc caming)

GLASS PATTERNS AVAILABLE



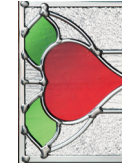
Kara
Glue chip backing glass with clear
bevels and brass or zinc caming



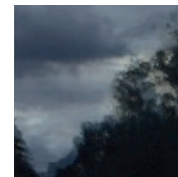
Monza
Grey bevels with various textured
glass pieces and zinc caming



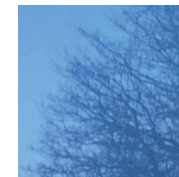
Aspen
Grey bevels with various textured
glass pieces and zinc caming



Edwardian
Various coloured and textured glass
pieces with zinc caming



Clear



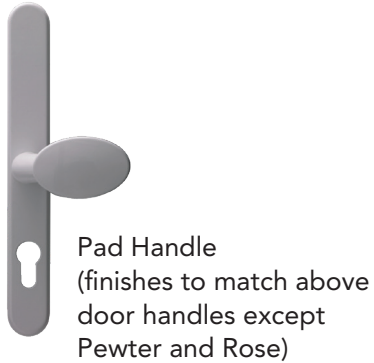
Satin



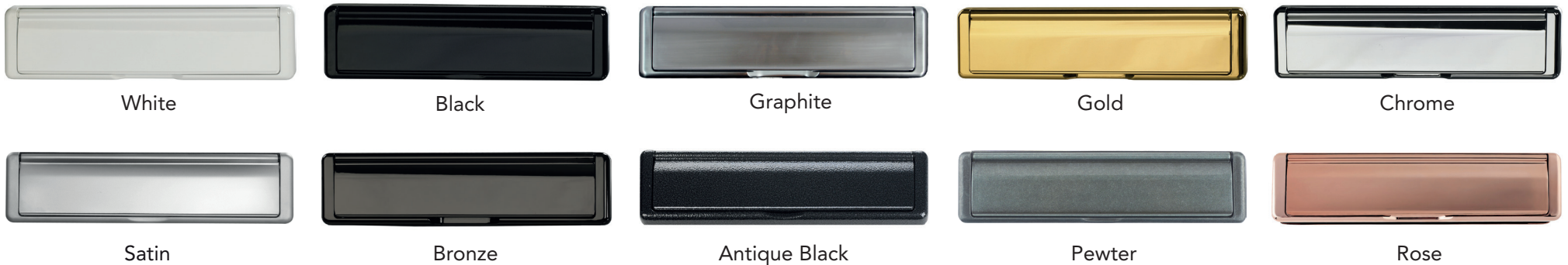
Stippolyte

DOOR FURNITURE

Door Handle Options



Letter Box Options



ADDITIONAL FURNITURE OPTIONS

Bull Ring Knockers

Great design is all about the detail.

Our specialist range of Bull Ring Knockers will provide the finishing touches and all important kerb appeal.

This functional yet aesthetically pleasing knocker is available in the following finishes.



Decorative Door Knobs

This elegant range is available in the following finishes.

White
Black
Graphite
Gold
Chrome
Satin
Bronze
Pewter (shown)
Antique Black



Period Door Furniture

For period style doors, the below ornate furniture is available.



Regal Handle
(Pewter only)

Spire Knocker
(Pewter only)



Architectural Letter Box (Pewter & Graphite only)

Grade 316 Austenitic Stainless Steel

For areas of the country, particularly susceptible to increased corrosion such as coastal areas, you have the option of our Grade 316 Austenitic Stainless Steel suite of door furniture.

The suite comprises of a handle, door knocker and letter box as featured below.



Contemporary Offset Pull Bar Handles

70mm Contemporary door styles can be enhanced further with the addition of Grade 316 Austenitic Stainless Steel offset pull bar handles.

You have a choice of 3 bar lengths, 1800mm, 800mm and 400mm.



Construction

Every 70mm Ultimate Composite Door is manufactured to the highest of standards to ensure it is strong, durable and secure.

The door has a perimeter sub-frame of a solid, water-resistant polymer material, which is reinforced with Laminated Veneered Lumber (LVL).

A thermoset GRP skin is bonded to this sub-frame and the core of the door is then filled with high density, 100% CFC-free polyurethane foam. Water resistant polymer composite rails protect the core from damage or water absorption.

The door's core is what makes it so thermally efficient and so good at reducing sound. In fact, as you can see from the images on page 4, it is amongst the most thermally efficient door on the market, increasing your home's energy efficiency and saving you money on your energy bills.

The high impact resistant thermoset GRP skin not only keeps your door looking good, it will not expand and contract laterally so your door will not crack or delaminate. All colours are over sprayed with a durable paint that will not peel or crack.

Technical figures

The 70mm Ultimate Composite Door has a wealth of facts and figures that prove its quality. The door:

- achieves BS 6375-1 for weather tightness, air, wind and water
- reduces outdoor noise by an average of 31dB
- achieves Global Warming Potential (GWP) score of less than 5
- achieves Ozone Depletion Potential (ODP) score of zero

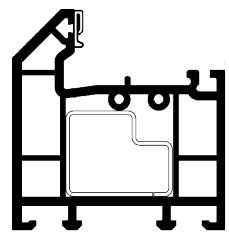
In other words, everything about the Ultimate 70mm composite door has been designed to enhance your home for years to come.

Care & Maintenance

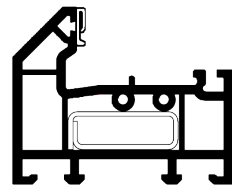
Your 70mm Ultimate Composite Door has been designed to be easy to maintain. To keep your door clean, prolong the life of the surface finish and protect your warranty, we recommend you wash it regularly using warm soapy water (washing up liquid is ideal) and a soft, lint-free cloth. If you live in a coastal area, in a heavily industrialised area or near a main road, you may need to clean your door more frequently.

It is important that you DO NOT use any of the following on your door:

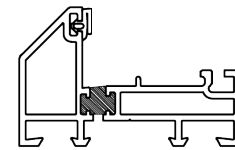
- abrasive cleaners or scouring pads
- any type of bleach or solvent (e.g. white spirit, methylated spirit, cellulose thinners, acetone or nail varnish remover)
- any type of adhesives or tack for providing temporary protection or fixing of seasonal or other decorations
- high pressure or steam cleaners



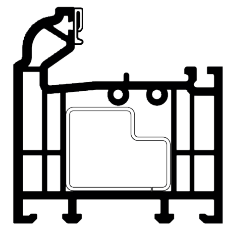
72MM PVC-U THRESHOLD
(BEVELLED)



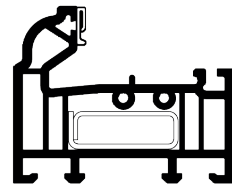
56MM PVC-U THRESHOLD
(BEVELLED)



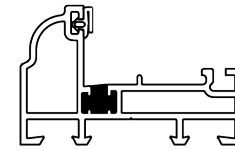
44MM ALUMINIUM THRESHOLD
(BEVELLED)



72MM PVC-U THRESHOLD
(OVOLO)

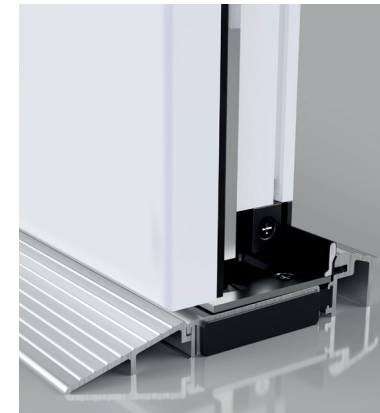


56MM PVC-U THRESHOLD
(OVOLO)



44MM ALUMINIUM THRESHOLD
(OVOLO)

Threshold Options



STORMGUARD PART M COMPLIANT
AM5 OUTWARD OPENING THRESHOLD
(AM3 inward opening also available)

Door and glass colours shown in this brochure should be used for guidance only as the limitations in photographic and printing processes may mean that colours of products vary from those illustrated. All information in this publication is provided for guidance only and is given in good faith. We reserve the right to alter specifications without prior notice.

Reproduction of this brochure in whole or part is strictly forbidden without prior written consent. All images are for illustration purposes only.

All door images shown have been supplied by Distinction Doors Ltd. and they remain at all times the sole property of Distinction Doors Ltd.



Sherborne

Windows • Doors • Glazed Extensions



w: sherbornewindows.co.uk

e: enquiries@sherbornewindows.co.uk

t: 01252 370 917



Window & Door Showroom

135 Lynchford Road,
Farnborough, Hampshire
GU14 6HD

Conservatory & Orangery Showsite

Lavershot Barns,
London Road, Windlesham,
Surrey GU20 6LL

Timber Windows of Hartley Wintney Showroom

55 High Street,
Hartley Wintney,
Hook RG27 8NY

Timber Windows of Sunningdale Showroom

2 Broomhall Buildings,
London Road,
Sunningdale SL5 0DH

*the***ultimate**[®]
collection

70mm Double Rebated Composite Doors