

**ALUCO™**  
Steel Look Collection



Interior • Exterior • Doors • Screens • Windows



# STEEL LOOK COLLECTION

## CONTENTS

<b>Aluco Exterior Steel Look Collection</b> .....	<b>10</b>	<b>Aluco Interior Steel Look Collection</b> .....	<b>36</b>
Exterior Steel Look Single Doors .....	20	Interior Steel Look Single Doors .....	42
Exterior Steel Look Double Doors .....	22	Interior Steel Look Double Doors .....	43
Exterior Steel Look Windows .....	26	Interior Steel Look Sliding & Pocket Doors .....	44
Exterior Steel Look Bi-folding Doors .....	27	Interior Steel Look Screens & Partitions .....	46
Key Features .....	28	Key Features .....	48
Furniture Range .....	30	Furniture Range .....	50
Colour Range .....	34	Colour Range .....	52



## OUR EXQUISITE BESPOKE WINDOWS DOORS AND SCREENS

The Aluco Collection offers exceptional steel look architectural glazing solutions, meticulously designed to transform your living space into something truly extraordinary.

From our iconic steel replica range of exterior windows and doors, through to our stunning interior doors and screens, and our versatile Bi-Folding door range, Aluco offer a unique solution to you and your home.

# ALUCO™

Steel Look Collection

### Attention To Detail

Every product in the Aluco Collection is designed and built specifically for each individual customer, handcrafted by our skilled craftsmen to your exact specification.

Our ethos is one of exceptional design and product performance, created to compliment the home and lifestyle of our customers. We believe in producing architectural solutions that will delight customers now, and for years to come.





## DISTINCTIVE DESIGN

### Designing Spaces to Enhance Your Home

Aluco have an exceptional reputation, where attention to detail and superb British craftsmanship is second to none.

We specialise in the design and manufacture of iconic steel effect windows, doors and screens covering both interior and exterior applications, for truly luxe living.

The Aluco Collection is available in an extensive selection of colour and finish options, including a stunning range of traditional and contemporary furniture and ironmongery styles and designs to compliment your home.



# THE SUBTLE DEGREE OF DIFFERENCE



## Creating Lasting Impressions Through Interior Design

Attention to detail is at the core of the Aluco experience. Our range of exceptional windows and doors are designed to ensure every detail is captured.

Slim and equal glass sightlines maximise glass area and provide uniform appearance to folding doors; a range of colour furniture to seamlessly match your windows and door frames; dual colour finishes to allow different internal and external designs; and handle designs to suit every room in your home. All can be tailored into every Aluco product to suit your needs.





ELEGANT  
LUXURY  
DISTINCTIVE  
ICONIC  
HERITAGE  
INDUSTRIAL  
TIMELESS  
ART DECO  
STEEL LOOK



ALUCO™  
Steel Look Collection

ALUCO™

EXTERIOR  
STEEL LOOK  
COLLECTION

# ALUCO™ TURNING YOUR DREAMS INTO REALITY

**Timeless Design,  
Advanced Performance**

Our signature ALUCO collection is inspired by traditional, industrial steel windows and the highly sought after Scandi-style. Combining cutting edge technology with artisan designs and craftsmanship, we create striking but minimalist metal frames, featuring slim sightlines and the iconic grid-like designs, with styles that range from classic heritage to contemporary. These versatile windows and exterior doors have the ability to completely transform your home, letting in more light and creating luxury living spaces.





### Thoughtful Liveable Spaces

The Aluco Exterior range allows a multitude of style options to be created, all to suit your exterior needs whilst maintaining the 'classic' steel look appearance.

From French doors, bi-folding doors, orangery windows and so much more.

Our steel look Aluco Exterior range is only restricted by your imagination.





## FLOATING LOCK SUPER SLIM BAR 20MM

The ultimate in Steel Look. The 20mm bar option is our Super Slim solution to creating the slimmest sightlines possible. The super slim bars can be applied horizontally as shown with the doors split into three panels, or you can choose to have the doors split into 4 panels. There is even an option to create a Georgian style grid if that is the look that compliments your home best.



## FLOATING LOCK NO BARS

If the minimalist look is your preferred choice then choosing no bars whatsoever is the option best for you. Seeing only the lock housing/s the rest is clear uncluttered glass.



# BESPOKE FLOATING LOCK

To further enhance the Aluco Steel Look collection a 'Floating Lock' design is available on all interior and exterior single and double doors. This unique design enables a full sheet of glass to be incorporated and thus remove the need for any glazing bars. Alternatively, this design can also be chosen along with slim 20mm horizontal glazing bars above and below the floating lock, the choice is yours.

In our experience discerning customers wanting to create a solution as close to authentic steel as possible opt for either the 25mm slim or the 20mm super slim horizontal bars. These slimmer than standard bars are the preferred choice of customers on 70% of orders..

The glazing bars are available in:

SLIM BAR 25MM

SUPER SLIM BAR 20MM

NO BARS



## FLOATING LOCK SLIM BAR 25MM

25mm slim bars are a popular choice for Aluco customers. This door combination features the bars in a grid format. Customers can choose to have horizontal bars only and remove the vertical bars from the design if required. The 25mm slim bars can only be used within doors when made with the Aluco unique floating lock box and one piece glass unit.



## STANDARD BAR 42MM

Standard 42mm bars are a popular choice for those customers who prefer to see a wider bar than the 25mm and 20mm upgrade options. Standard bars do not require the use of a floating lock box and special one piece shaped glass units.

# EXTERIOR STEEL LOOK SINGLE DOORS

Delivering classic industrial finish products with slim sightlines, to provide maximum natural light whilst delivering thermal, security and weathering performance.

Exterior steel look single doors feature authentic design details to include standard horizontal glazing bars, slim 25mm upgrade or super slim 20mm upgrade. Standard bottom rails or deep bottom rails are available as well as horizontal and vertical glazing bars.



# EXTERIOR STEEL LOOK DOUBLE DOORS

Sitting proudly in places single doors cannot reach, Aluco double doors have a commanding presence usually at the rear of your home opening onto your garden space. Slim or super slim glazing bar options help create the steel look you desire. The primary opening door houses the handle of your choice, whilst the secondary door leaf is opened up with simple to operate concealed finger bolts.





**VERSATILE  
DESIGN,  
ENDURING  
APPEAL**



# EXTERIOR STEEL LOOK WINDOWS

Delivering classic industrial finish products with slim sightlines, to provide maximum natural light whilst delivering thermal, security and weathering performance.

Choose from an array of colour options from single colour or dual colour if you prefer a contrasting look from inside to outside of your home. All Aluco windows can be dressed with a number of handle options ranging from classic art deco, contemporary teardrop or the original steel look.



# STEEL LOOK BI-FOLD DOORS

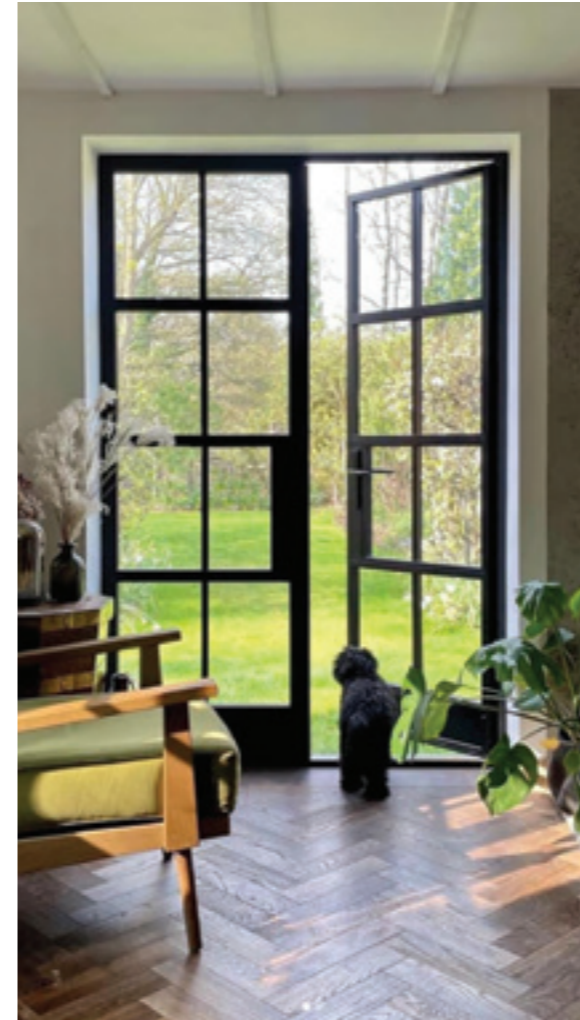
Our Bi-Folding door is also available in an ultra-slim version, reducing sightlines and delivering maximum light. To compliment our signature, steel-effect windows and doors we also offer a steel look option which can transform traditional bi-folding doors to include the iconic grid-like glazing bars.

Meticulously designed to ensure smooth operation, with each door leaf folding effortlessly onto each other, allowing you to open up an entire wall space. Available in an extensive range of configuration options, colour finishes and low threshold options, this is a truly versatile door system, designed for modern living.



# ALUCO™ EXTERIOR STEEL LOOK COLLECTION

The Aluco steel look system uses modern high performing materials to create traditional steel look style doors, screens, partitions and windows. Delivering classic industrial finish products with slim sightlines, to provide maximum natural light whilst delivering thermal, security and weathering performance.



## Key Features

- Fully crimped and glued corner joints for strength and weather sealing
- Range of shapes, raked and arched windows, doors and screens
- Very slim sightlines to maximise glass area and light
- Powder coated paint for durability and quality. Available in a range of smooth and textured finishes
- 28mm warm edge, argon filled double glazed units to all products. Doors and side screens toughened safety glass as standard
- Security multi-point locking to all windows and doors, designed specifically for steel look products
- Thermally broken profiles for enhanced energy performance
- Bespoke hand crafted manufacturing of all products in the UK

## Check List

Thermal broken powder coated steel look frames

Aluco  Steel

28mm double glazed and single glazed options

Aluco  Steel

Multi-point security locking to all windows and doors

Aluco  Steel

Comprehensive shaped frame options

Aluco  Steel

Interior and exterior door, screen, partition and window configurations

Aluco  Steel

Equal glass sightlines for all products

Aluco  Steel

Range of furniture styles and options

Aluco  Steel

Air, water and wind resistant thanks to a dual seal system

Aluco  Steel

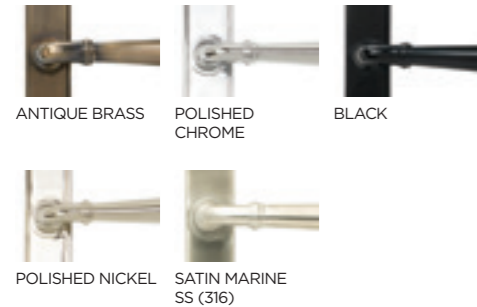
Manufactured in the UK

Aluco  Steel

# EXTERIOR STEEL LOOK FURNITURE

## Brompton & Newbury Handles

The Brompton & Newbury of window and door handles are available in a choice of bulb and textured, knurled surface designs and are all available in a range of 5 finishes. All furniture options are perfectly suited, so window and door options will match perfectly.



BROMPTON DOOR HANDLE

NEWBURY DOOR HANDLE

BROMPTON WINDOW HANDLE

NEWBURY WINDOW HANDLE

## Art Deco Range

For that truly Art Deco look, this range of suited window and door handles are available in a range of 4 finishes.



POLISHED CHROME ART DECO WINDOW HANDLE

ANTIQUE BRASS ART DECO DOOR HANDLE

ANTIQUE BRASS

POLISHED CHROME

BLACK

POLISHED NICKEL

## 360



VENTISS 360 CHROME

VENTISS 360 WHITE

VENTISS 360 CHROME/WHITE

VENTISS 360 BLACK

VENTISS 360 CHROME/BLACK

VENTISS 360 GOLD

VENTISS 360 CHROME/GOLD

VENTISS 360 SATIN

VENTISS 360 CHROME/SATIN

## TEARDROP



VENTISS TEARDROP WHITE

VENTISS TEARDROP CHROME/WHITE

VENTISS TEARDROP BLACK

VENTISS TEARDROP CHROME/BLACK

VENTISS TEARDROP GOLD

VENTISS TEARDROP CHROME/GOLD

VENTISS TEARDROP SATIN

VENTISS TEARDROP CHROME/SATIN

VENTISS TEARDROP CHROME



ALUCO STEEL LOOK WINDOW HANDLE

## Aluco Steel Look Window Handle

Replicates the appearance of a traditional cockspur handle and perfectly compliments the steel look window design. Available in:

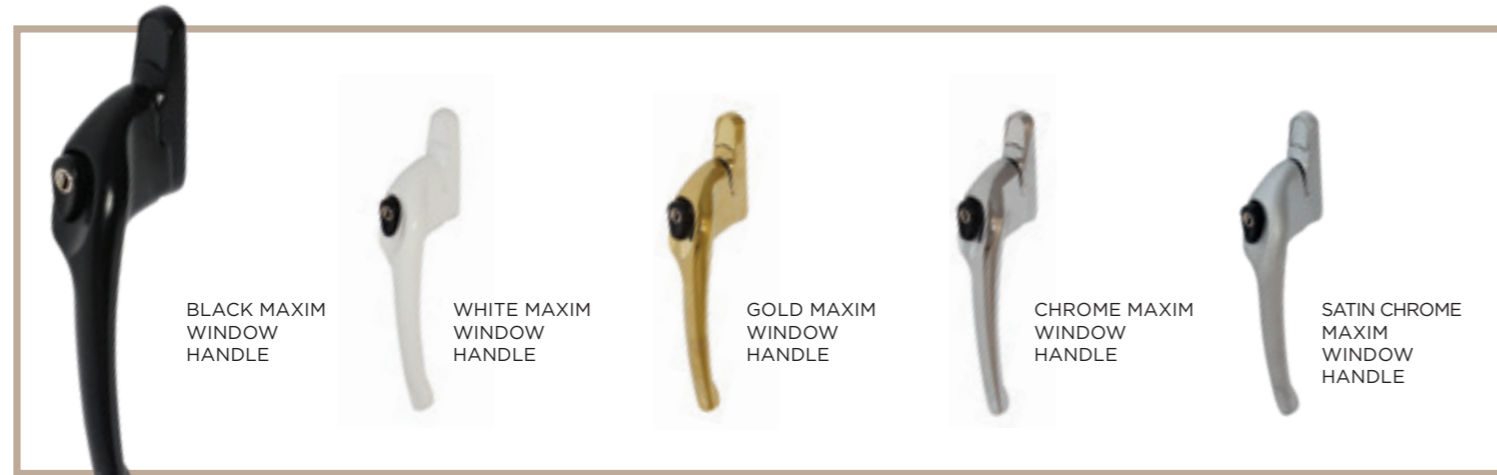
- SATIN CHROME
- GUNMETAL
- ANTIQUE BLACK
- DARK BRONZE



# EXTERIOR COLLECTION FURNITURE

## Window & Door Range

The range of standard window and door handles are both available in colour matched white, black, gold and chrome finishes. Standard on all Exterior steel look window and doors.



# BI-FOLDING DOOR FURNITURE



## LEVER HANDLE

For all Bi-fold main doors, the lever handle is provided for use with all main traffic opening doors. Available in:

- BLACK
- WHITE
- GOLD
- CHROME
- ANTHRACITE GREY



## SHOOTBOLT HANDLE

A slim neat design incorporated with all locking hinged opening doors. Available in:

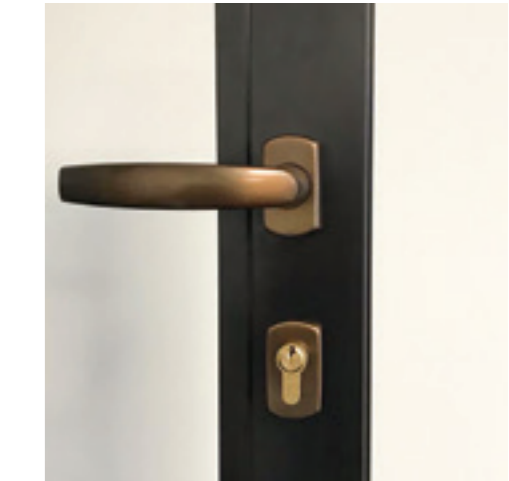
- BLACK
- WHITE
- CHROME
- ANTHRACITE GREY



## D HANDLE

Where a hinge opening requires an easy to close door, the D handle is neatly incorporated within the centre hinge. Available in:

- BLACK
- WHITE
- CHROME
- ANTHRACITE GREY



## STEEL LOOK DOOR HANDLE

This separate lever handle and escutcheon is an option which provides a more authentic alternative to the standard lever and all in one backplate. Available in 4 colours to suite with the Steel Look casement window handle.

# COLOURS THAT INSPIRE

## FOR THE ALUCO EXTERIOR COLLECTION



### STANDARD COLOURS

Our range of smooth flat finishes that are the most popular colours of choice.



Having selected the finish for your project, simply speak to your supplier and they will arrange for a sample to be sent to you. Although the colours in this brochure are a very accurate representation, they are not 100% accurate.

### Statement

An exclusive range of textured finishes that combine with a unique tactile finish, bringing style and durability to any building project.



### RAL Colour Options

Let your imagination run wild and choose any colour from the RAL colour option range.





SINGLE  
DOORS  
DOUBLE  
DOORS  
FRONT FACING  
SLIDER  
POCKET  
SLIDERS  
SCREENS



ALUCO™  
INTERIOR  
STEEL LOOK  
COLLECTION



# LUXURY STEEL-LOOK INTERIOR DOORS

## It's The Inside That Counts

Every door in the Aluco collection is designed and handcrafted by our skilled craftsmen. Our ethos is one of the exceptional design and product performance, created to compliment the home and lifestyle of our customers. We believe in producing architectural solutions that will delight customers now, and for the years to come.

# INTERIOR DOORS, SCREENS AND PARTITIONS RANGE

The Aluco steel look interior system is a unique bespoke design, created to give you a traditional steel look style of doors, screens and partitions. Delivering classic industrial finish products with slim sightlines, to provide maximum natural light whilst delivering stylish design and practical design choice for any room or lifestyle.

Our interior doors and screens will enhance any home, with classic details like slim horizontal and vertical glazing bars, bottom kick plates, rose back plate handles as well as the bespoke Floating Lock. All these go to provide you with the iconic industrial finish, available as single and double glazed options.



# INTERIOR STEEL LOOK SINGLE DOORS

With classic details like handle back plates, slim horizontal and vertical glazing bars, bottom kick plates, rose back plate handles as well as the bespoke Floating Lock.

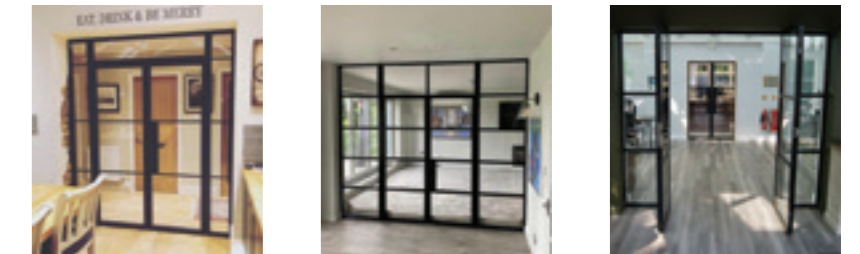


## UPGRADE TO A SUPER SLIM BAR 20MM FLOATING LOCK

To further enhance the Aluco Steel Look collection a 'Super Slim Bar 20mm Floating Lock' design is available on all interior single and double doors.

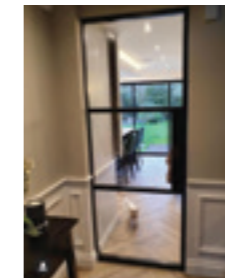
# INTERIOR STEEL LOOK DOUBLE DOORS

Interior double doors have the same features as the single door. The door meeting stile is a one-piece design for added strength and is provided with a range of finger-bolts available in a range of lengths for easier operation and reach.



# INTERIOR STEEL LOOK SLIDING & POCKET DOORS

Offering a classic industrial finish with wide lock body, deep bottom rail and slim transom bars, the classic art deco steel look finish. Providing an alternative design choice to any room.





## INTERIOR STEEL LOOK SCREENS & PARTITIONS

Aluco interior screens and partitions use the same core components as the doors but are manufactured with slim 33mm outer-frame. They also incorporate the standard 37mm transoms and are also available with ultra-slim 20mm Astragal bars which can accommodate various style choices. Clear and obscure glass designs are also available.

Our interior screens add an extra dimension to your room without closing any of your room off to natural daylight.



# ALUCO™ INTERIOR STEEL LOOK COLLECTION

The Aluco steel look interior system is a unique bespoke design, created to give you a traditional steel look style of doors, screens and partitions. Delivering classic industrial finish products with slim sightlines, to provide maximum natural light whilst delivering stylish design and practical design choice for any room or lifestyle.



## Key Features

- Powder coated solid chambered aluminium extrusion with no thermal break
- Flush 150mm wide lock body
- Circular back-plate escutcheon handle ranges
- Lock with one piece keep
- Deep bottom rail
- Slim 33mm transom
- Flush bottom sash with double woolpile seal
- 4mm toughened glass as standard
- Minimum 4 No slim knuckle hinges
- Q-lon perimeter door seal
- All corner joints glued and crimped

## Check List

Solid aluminium chambered profile

Aluco  Steel

150mm wide flush lock body

Aluco  Steel

Circular backplate to handle and bathroom locks

Aluco  Steel

Lock with adjustable tension and dust pocket tidy to keep

Aluco  Steel

150mm one piece - flush deep bottom rail

Aluco  Steel

Suited door and sidelight transoms

Aluco  Steel

Flush bottom sash with double woolpile seal

Aluco  Steel

4mm toughened glass as standard

Aluco  Steel

Minimum number of 4 slim hinges, traditionally fitted with 2 at the top for greater strength

Aluco  Steel

Q-lon perimeter seal for quiet soft closing action

Aluco  Steel

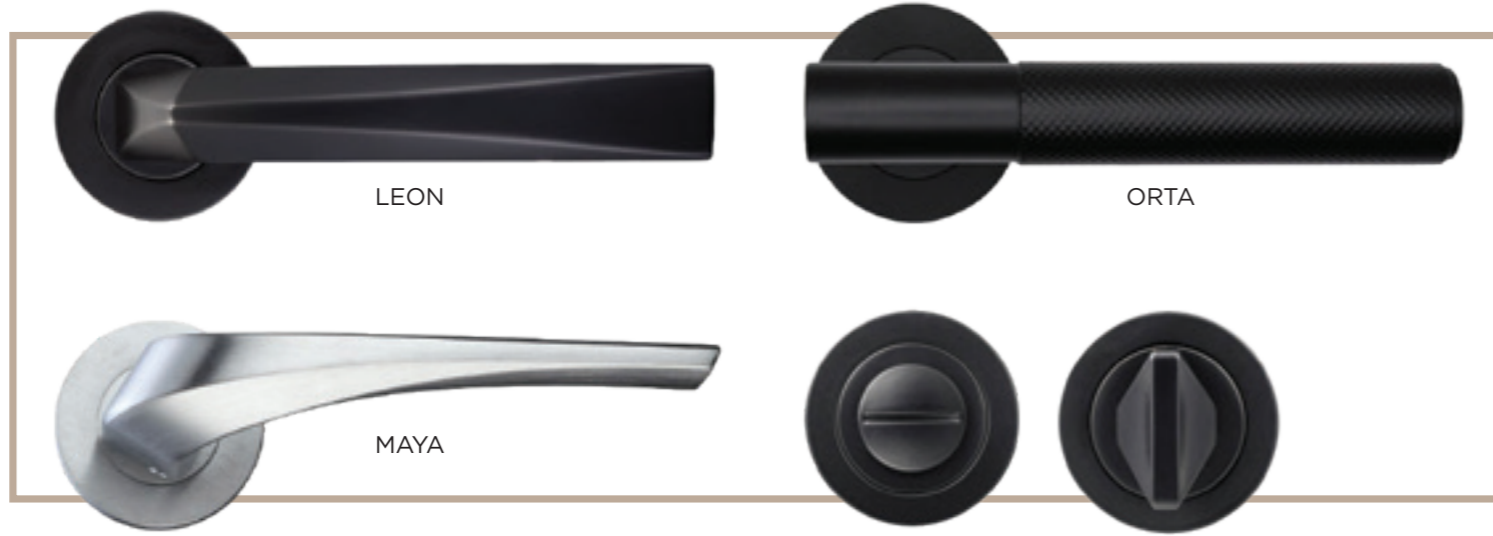
Double crimped and glued corner for added strength and durability

Aluco  Steel

# INTERIOR STEEL LOOK FURNITURE

## Single & Double Door Range

- 50 x 8mm circular Rose
- Lever handle with separate bathroom escutcheon
- Sprung handle
- Leon & Maya - Black, Satin Chrome & Antique Brass finishes
- Orta - Black & Satin Brass finishes.



## Double Door Finger Bolt - flush dust excluding pockets

- Wood and concrete options
- Flush Fitting
- Gold, Chrome & Satin Chrome finishes.



SATIN CHROME      CHROME

## Wall Mounted Door Stop

- 80mm projection
- Concealed-fix
- Satin Chrome & Chrome finishes.



SATIN CHROME      CHROME

## Wall Mounted Door Stop

- 80mm projection
- Concealed-fix
- Satin Chrome & Chrome finishes.

# INTERIOR STEEL LOOK FURNITURE

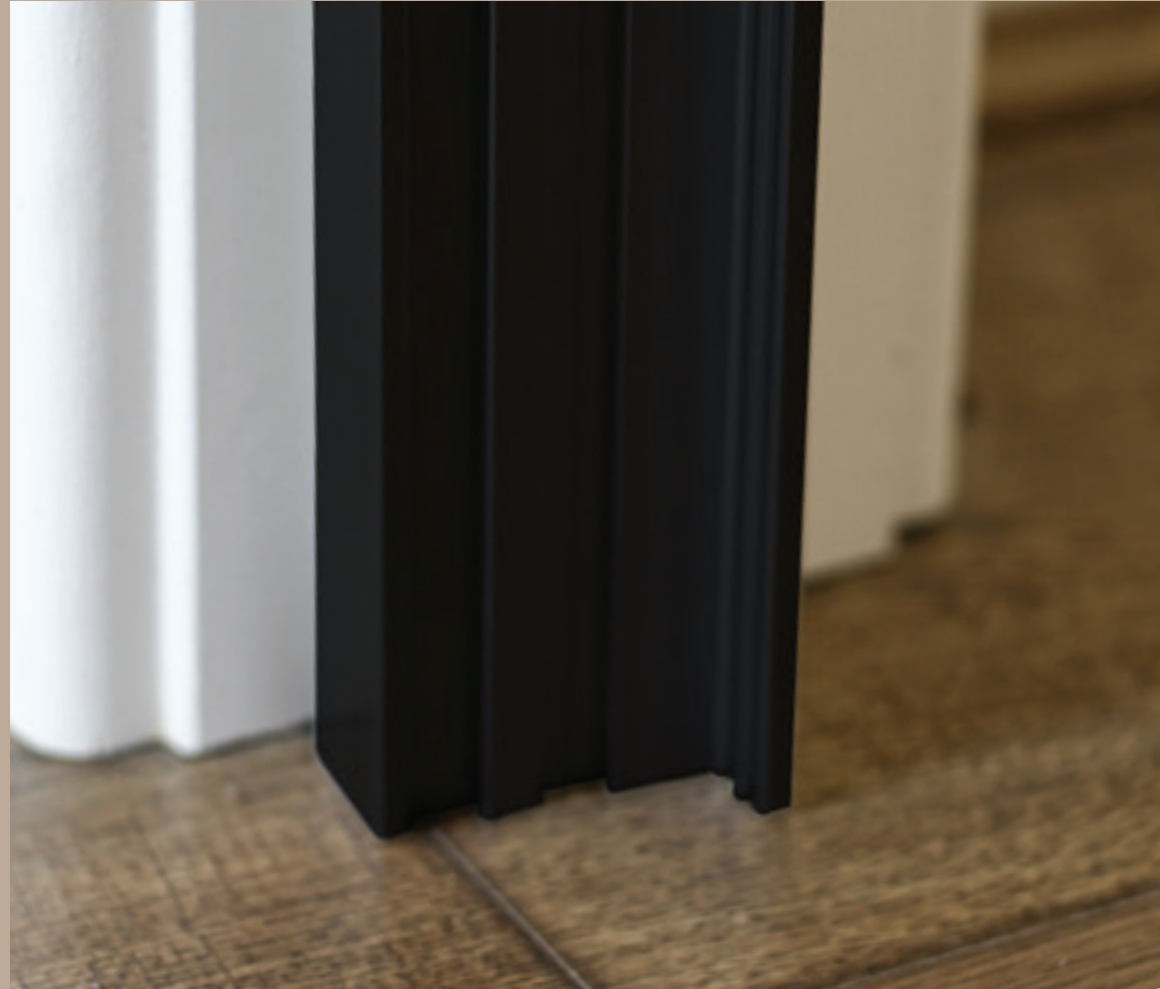
## Sliding Door Handle

- Rectangular recess pull
- Flush fitting
- Satin Chrome & Antique Brass finishes.



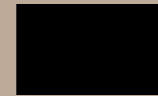
# COLOURS THAT INSPIRE

FOR THE ALUCO INTERIOR COLLECTION

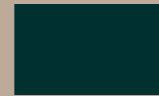


## STANDARD COLOURS

Our range of smooth flat finishes that are the most popular colours of choice.



Matt Black  
RAL 9005



Anthracite Grey  
RAL 7016

## SPECIAL COLOURS

Choose any colours from the RAL colour option range.



Having selected the finish for your project, simply speak to your supplier and they will arrange for a sample to be sent to you. Although the colours in this brochure are a very accurate representation, they are not 100% accurate.

# The ALUCO™ Experience

The first step in your journey is to visit one of our Aluco retail partner showrooms. See for yourself the exceptional quality and design of our window and door collection, discover our range of finishing touches and discuss your project with an experienced designer.

When you choose a product from the Aluco Collection you're choosing more than just a supplier, you're choosing a dedicated team, unrivalled product performance and an unsurpassed passion for quality.

Contact us to put you in touch with your Local Retail Showroom Partner  
**T: 01480 436578**  
**E: [info@aluco.co.uk](mailto:info@aluco.co.uk)**  
**[www.aluco.co.uk](http://www.aluco.co.uk)**

Follow us on Instagram



@aluco.uk







**ALUCO**<sup>TM</sup>  
Steel Look Collection